



000 matachana

S1000

Steam Sterilizer

THE ECOSMART
STERILIZER
MADE TO LAST



+ SUSTAINABILITY



+ CONNECTIVITY



+ DURABILITY



MADE TO LAST

STERILIZATION CHAMBER
LIFETIME WARRANTY

VACUUM EJECTOR
LIFETIME WARRANTY

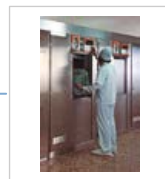


Since its foundation, MATACHANA development policy has been to elaborate long lasting products. The 25 year-old S1000 sterilizers still in operation in the market are living proof of this.

1975



1983



1987



1990



2000



2008



2012



2024



Did you know how long is the **25 years lifespan** of 1 MATACHANA sterilizer in numbers?

+ 62,000 cycles performed

+ 375,000 reprocessed sterilization modules

+ 187,000 patient surgeries

Sterilizer working 313 days per year, running 8 cycles per day with chamber capacity of 6 SM, and using 2 SM per surgery.

STERILIZATION CHAMBER LIFETIME WARRANTY!

MATACHANA has been producing and welding its chambers for more than 40 years in a dedicated factory. The experience, total production control and the highest quality of 316L stainless steel used, provide the confidence to grant the **chamber lifetime warranty (15 years) for all new S1000 sterilizers (*)**



VACUUM SYSTEM BY EJECTOR LIFETIME WARRANTY!

MATACHANA always stands for the vacuum pump ejector solution as the preferred vacuum system. During the last 30 years, the ejector has proven its efficiency, efficacy and specially its **reliability** compared to other vacuum systems. Its high reliability and reduced maintenance cost, bring us to implement **ejector lifetime warranty (15 years) for all new S1000 sterilizers. (*)**

(*) These conditions must be observed:

- Installation requirements and usage must be fulfilled, according to the IFU
- Maintenance must correctly be performed, following MATACHANA's indications



+ Info

+ SUSTAINABILITY

WATER SAVING

ENERGY SAVING

ECOFRIENDLY PACKAGE

SUSTAINABLE
COMPONENTS



S1000 was specially developed keeping the sustainability as the first overriding requirement.



WATER SAVING

Two new configurations which will allow to save water during regular operation.



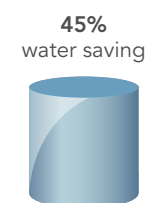
Up to **45% water saving** per cycle, thanks to built-in cooling coil connected to the facility's chilled water system in a close loop (included as standard).



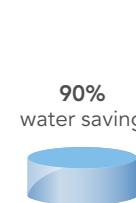
Up to **90% water saving** per cycle, thanks to the built-in heat exchanger and pump connected to the facility's chilled water system in a close loop (optional configuration).



REGULAR



EcoSAVE



EcoSAVE+

45%
water saving

90%
water saving



ENERGY SAVING

New steam generator insulating material and the **Smart steam generator management** combined with the **Auto Power off** and **Auto Start Week**, as standard configurations, represents up to **15% energy saving**.



SUSTAINABLE COMPONENTS

The accurate selection of stainless steel suppliers, as well as MATACHANA's proximity supplier policy allows a 20% carbon foot print reduction.



...all these features combined with the **ECOFRIENDLY PACKAGE** produced with wood from sustainable forests turns the S1000 into the **ECOSMART STERILIZER**

MATACHANA SUSTAINABLE FACTORIES

GREEN ELECTRICITY AND WATER CONSERVATION



SUSTAINABLE INNOVATION IS THE WAY FORWARD

In line with our corporate responsibility, a targeted orientation of MATACHANA's innovation product development process towards sustainability is essential. For this purpose, we are analyzing where CO₂ is generated and where it can be saved, which is a first step towards CO₂-neutral production.

GREEN ELECTRICITY



Since 2023, all MATACHANA production sites located in Spain have been supplied with **green electricity**. This has made it possible to achieve a CO₂ emission reduction >90% in the electricity field (based on the GHG Protocol standard). We have implemented additional measures to achieve energy reductions.

Estimated annual carbon foot reduction: **>150,000 kg CO₂-eq**



x 3000 cars/day



x 14 round-the-world flights



x 6800 trees/year

WATER CONSERVATION



Since 2009, all MATACHANA production sites have been applying water preservation policies by reusing the water needed for the pre- assembly, assembly and final control of all MATACHANA sterilizers.

The total amount of **water saved** is **more than 1,300,000 litres per year**.



x 1800 persons/year



x 1700 homes/day



x 2100 hospital beds/day

+ ERGONOMICS

COMPREHENSIVE LOADING SOLUTIONS RANGE

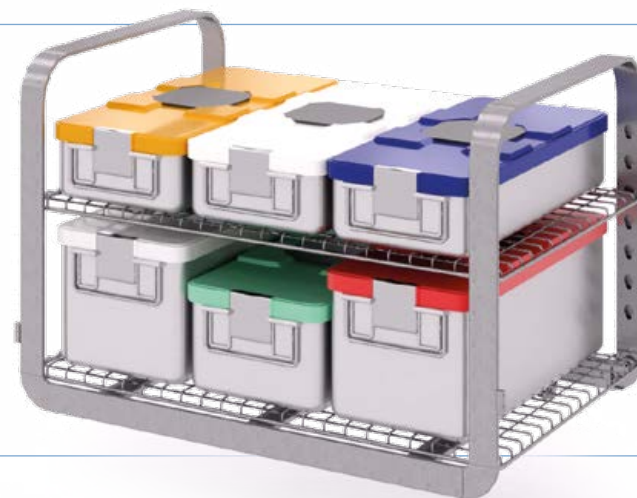


Loading the sterilizer is an essential step of the sterilization process which needs an interaction of the end user. Each user may have different needs, but ergonomics is a common request.

With the **comprehensive loading solutions range**, trolleys and automatic loading systems, the S1000 is able to cover the most demanding needs taking ergonomics to a higher level.

Shelf rack for baskets and containers

- Multiple height adjustment for the shelves to maximize the loading capacity
- Available from 4 up to 10 SM
- Possibility to add up to 6 levels of shelves



TROLLEYS

Shelf racks

- Available from 4 up to 10 SM
- Fixed height and adjustable height versions
- Compatible with automatic loading systems



Effortless

- Provided by the automatic trolley, it allows to load and unload the racks just by pressing a button in the control panel.



EasyCHARGE

- For stackable baskets and containers
- Available from 4 up to 10 SM
- Fixed height and adjustable height versions
- No empty rack return is needed



The operational readiness of the sterilizers and the users working in the RUMED is becoming increasingly important. **Automatic loading systems** will allow the end user to focus on other important requests while the instruments are being loaded, processed and unloaded automatically.

AUTOMATIC OPERATION

Increases the efficiency by reducing the stress of handling heavy loads and shortens time spent loading/unloading the sterilizer.

LOAD CONFIGURATION FLEXIBILITY

Compatible with the shelf rack and EasyCHARGE.

AUTOMATIC CYCLE SELECTION

Allows the next load to be placed in readiness before being used.



Available from 4 to 12 SM capacity

Also available version compatible with EasyCHARGE system

LOAD PRESENCE SENSOR

The correct positioning of the load ensures a safety loading and unloading.

HALF LOAD DESIGN

Minimizes handling heavy loads and optimizes the available space in the RUMED.

BI-DIRECTIONAL MOVEMENT

Allows to return empty racks to loading area for a dynamic flow of racks.

ATS (Automatic Transfer System)

MATACHANA ATS (Automatic Transfer System) is a fully automated system for loading or unloading baskets, containers or racks which uses a single shuttle to move into the first available sterilizer.

Full automatic loading and unloading to minimize the risks of injuries when users have to handle heavy loads.

Automatic cycle selection via barcode reader ensures the correct cycle for each type of load.

Intelligent software integration to have an optimal usage of the sterilizers and an even wear and tear.

Optimized design and mobility for installations with architectural barriers.



+ ERGONOMICS

AL 10 Robot

AL10 robot (compatible with automatic loading systems) is a robotic system designed to transport containers and baskets from the preparation tables to the sterilizers, performing the transfer onto automatic modules and providing an innovative loading and unloading solution.

Continuous operation with constant loading and unloading ensures a high productivity inside the RUMED, even in installations with limited free space.

Fully automatic process to improve the work environment in a RUMED thanks to a significant noise reduction.

Long-term cost savings by reducing the need for repetitive tasks from the users, and minimizing wear and tear on equipment due to more precise and controlled usage.

Safe movement around people and obstacles, prioritizing secure interactions to maintain a continuous and protected operational flow.

Expanding on the advantages provided by ATS, our AL10 robot offers other enhanced benefits



+ ERGONOMICS

+ CONNECTIVITY

EasyVIEW®



MATACHANA has always been at the forefront of connectivity and back in 1998 developed EasyLOOK, the first version of data management solution. In 2024 the new and improved version is born - EasyVIEW®.

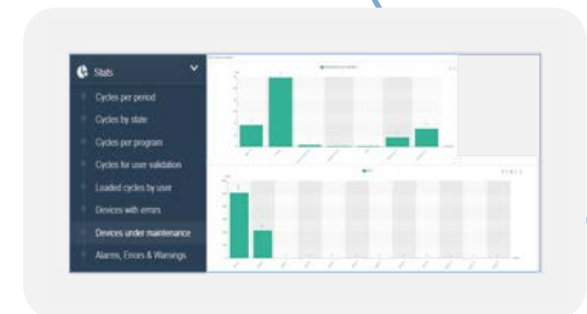
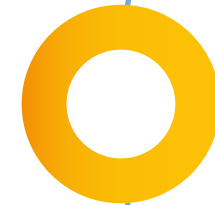


EasyVIEW® is a web server application specially developed for healthcare centres looking for **improving** their RUMED reprocessing **workflow** and equipment **documentation management**.

The application offers several benefits by means of the real-time data acquisition of up to 25 devices and can be displayed in computers, tablets and smartphones, IOS and Android.

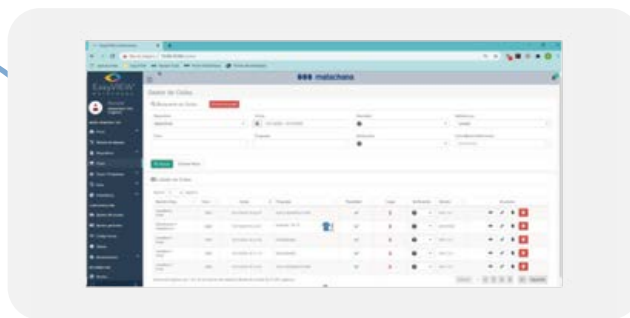
RUMED WORKFLOW OPTIMIZATION

- Real time equipment monitoring
- Productivity statistics
- Visualization in multiple devices



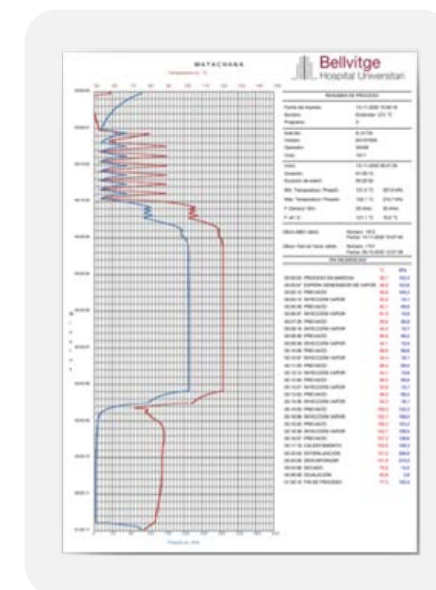
DOCUMENTATION IN 1 CLICK

- Full cycle history
- Cycle report searching engine



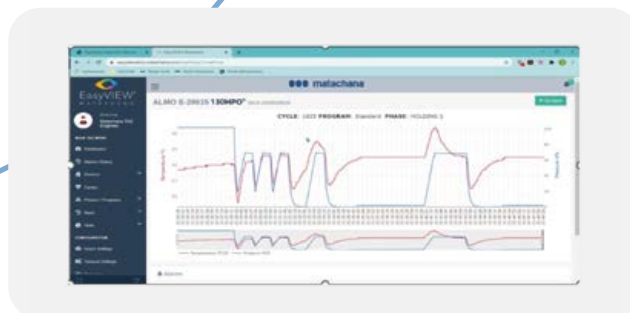
GUARANTEED TRACEABILITY

- Fully Integration with external traceability software
- Extended compatibility



EQUIPMENT DOWNTIME REDUCTION

- Cycle analysis
- Remote troubleshooting connection
- Automatic email notification to the Technical Service



OTHER DETAILS WHICH MAKES THE DIFFERENCE

TwinSMART

EasyRUN

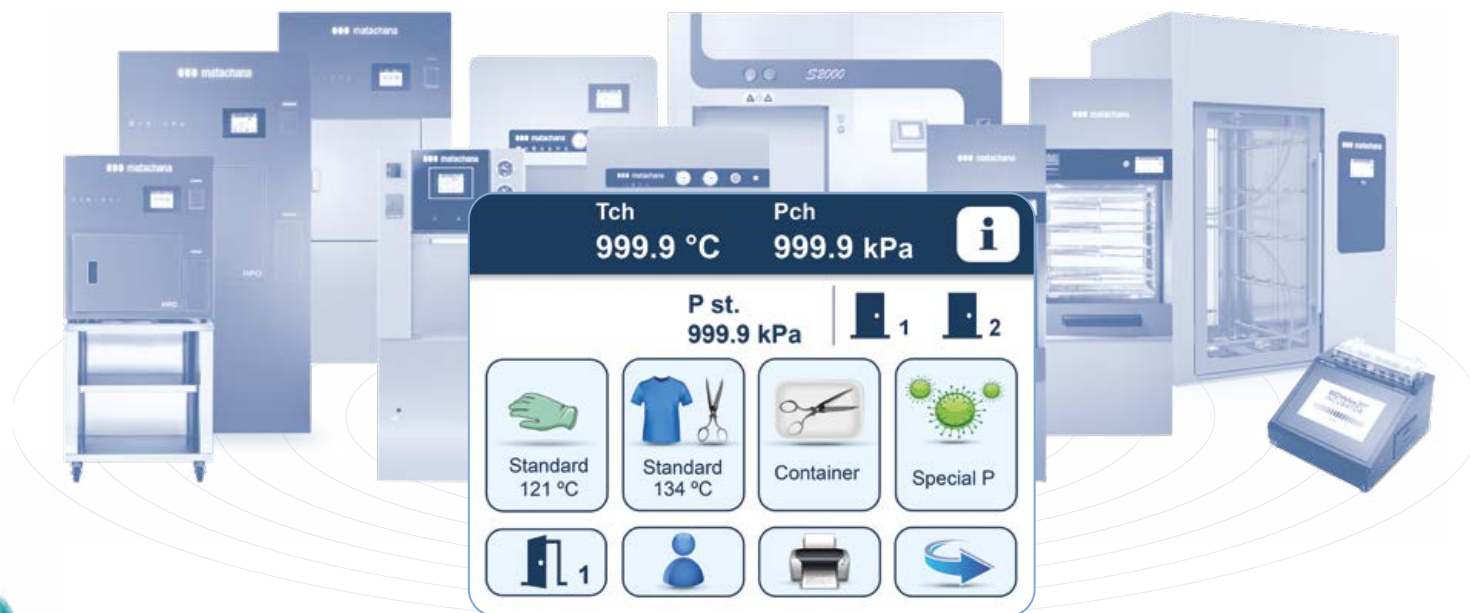
FEATURES AND BENEFITS



TwinSMART – double touch screen with EasyRUN interface

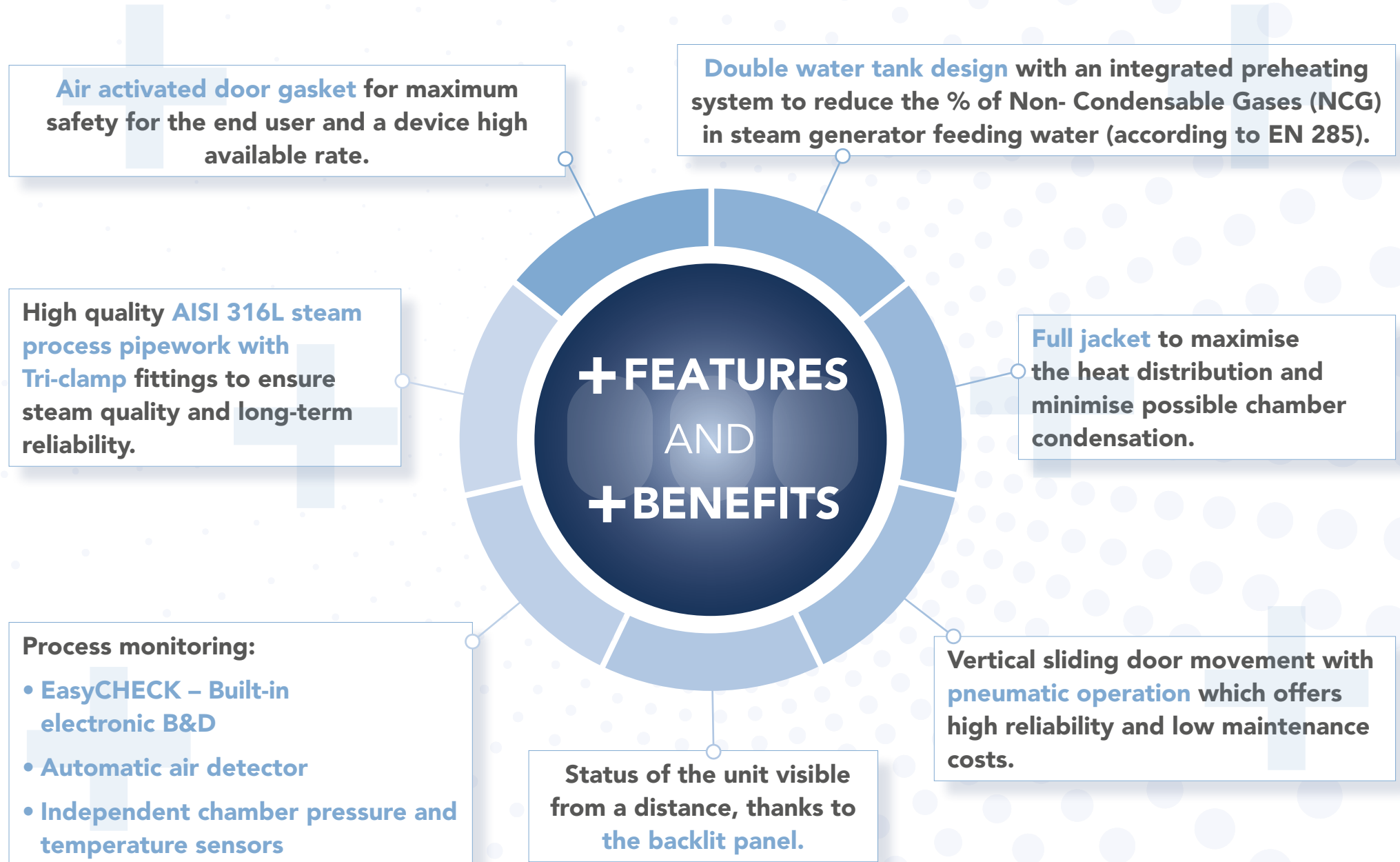
Double touch screen panels (applicable for double door sterilizers), allow users to control and monitor the sterilizer from both sides, optimizing workflow and enhancing the sterilizer's usability.

EasyRUN is an intuitive and easy-to-use interface to operate MATACHANA devices. It is **implemented** in the MATACHANA **Product Ecosystem**, simplifying and speeding up the user training on any infection prevention and control product.



EasyRUN interface is now implemented in both loading and unloading side of the S1000 sterilizer as a standard feature and positioned at **optimal ergonomic height** (<1.5 metres).





S1000 TECHNICAL DATA

Models	1004E-1 1004V-1	1004E-2 1004V-2	1006E-1 1006V-1	1006E-2 1006V-2	1008E-1 1008V-1	1008E-2 1008V-2	1010E-1 1010V-1	1010E-2 1010V-2	1012E-1 1012V-1	1012E-2 1012V-2
Nr. doors	1	2	1	2	1	2	1	2	1	2
Chamber – mm										
Width	670	670	670	670	670	670	670	670	670	670
Height	670	670	670	670	670	670	670	670	670	670
Depth	625	638	998	996	1265	1296	1735	1733	2000	1998
Chamber volume - Litres	279	285	445	445	565	578	774	773	893	892
Overall –mm										
Width	1710	1710	996	996	996	996	996	996	996	996
Height	1954	1954	1954	1954	1954	1954	1954	1954	1954	1954
Depth	958	977	1314	1336	1614	1636	2054	2076	2313	2338
Capacity SM	4	4	6	6	8	8	10	10	12	12
Capacity baskets SPRI	4	4	6	6	9	9	12	12	12	12
Power (kW)										
With generator (E version)	33	33	39	39	51	51	63	63	63	63
Without generator (V)	2.5	2.5	2.5	2.5	2.5	2.5	2.5	2.5	2.5	2.5

Other configurations under request. Please contact your local MATACHANA distributor.

Electrical Power supply 400 V 3~, PE / 50 Hz

Other voltages and frequencies on request

STANDARD AND OPTIONAL CONFIGURATIONS

Chamber / door / Jacket / Steam generator	
Stainless steel AISI 316L	●
Stainless steel AISI 316Ti (only chamber)	○
Chamber polishing	○
Control system and documentation	
Double touch panel	●
Double touch panel (10")	○
Built-in thermal printer	●
Barcode reader for load and cycle identification	○
USB port	●
Ethernet port	●
MATACHANA EasyVIEW®	○
Internal cycle data storage (> 1.000 cycles)	●
Maintenance	
Front and right maintenance	●
Left maintenance	○
Full front maintenance	○
Water and energy saving	
EcoSAVE / Water saving with external cooling system	●
EcoSAVE + / Water saving with external colling system	○
Auto-start Week / energy saving	●
Auto-suspend mode / energy saving	●
Steam generator energy management (only for versions with built-in electrical steam generator)	●
Process water quality	
Preheating system for Non-Condensable Gases (NCG) reduction	●
Steam generator water conductivity meter	○
Steam supply	
Plant steam supply (for V models)	●
Built-in electrical steam generator (for E models)	●
Built-in steam to steam generator	○
Built-in electrical & steam to steam generator	○
Steam manager	○
Steam by-pass (manual or automatic version)	○
Process monitoring	
EasyCHECK (built-in electronic B&D)	○
Automatic Air detector	○
Independent chamber pressure and temperature sensors	●
Sterilization and test programs	
Production programs: Standard 134 °C / Standard 121 °C / Rapid / Special P / Containers (heavy loads) (Other programs under request, please contact your local MATACHANA distributor)	●
Test programs: Vacuum, Bowie & Dick, Preheating	●
Flexible as per markets	
Liquid ring pump	○
Drain cooling under 60 °C	○
Steam generator desalinization	○
Built-in air compressor (to operate one unit)	○
Built-in air compressor (to operate two units)	○
Uninterrupted Power Supply (UPS)	○
Compliance with standards	
EN 285	●
Medical Device Regulation 2017/745 (MDR)	●
Pressure Equipment Directive 2014/68/EU	●
European Directive 2006/42/EC on Machinery	●
European Directive 2014/30/EU on Electromagnetic Compatibility (EMC)	●
European Directive 2014/35/EU on Low Voltage	●

MATACHANA expertise in numbers

- + **60** years experience
- + **25,000** sterilizers installed
- + **120** countries
- + **62,000,000** cycles performed
- + **375,000,000** reprocessed sterilization modules
- + **187,000,000** patient surgeries



Copèrnic, 8 · 08860 Castelldefels, Barcelona · Spain · Tel. (+34) 93 486 87 00

HEALTHCARE, LIFE SCIENCE & PHARMA | OPERATING IN +120 COUNTRIES | www.matachana.com

