

Steam sterilizers
Matachana S2000

S2000 steam sterilizers

With safety in mind at all times

MATACHANA S2000 sterilizers are designed, manufactured and tested according to strict quality control in accordance with the International Standards EN ISO 9001 and EN ISO 13485. They also comply with the requirements established in European Standard EN 285.

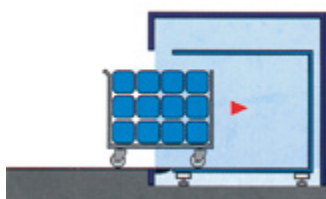


Main features

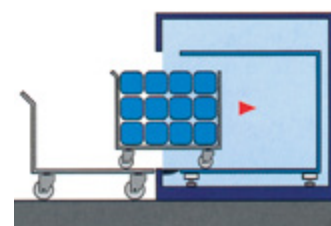
- Designed and built according to the European Standard EN 285.
- Chamber and jacket made of high quality stainless steel.
- Controlled by industrial microcomputer and high resolution user friendly colour touch screen.
- Stainless steel valves and steam pipes.
- Independent temperature and pressure sensors connected to the PLCs available in the device, ensuring the management and supervision of the readings.
- Integrated ejector-venturi vacuum system, silent and efficient with water-saving technique.
- Electric automatic doors with safety mechanism.
- Thermal printer for printing the completed cycle register.
- Possibility to print the report and graph of the cycle in A4 format using an external printer.
- Variants: for pit - ground level loading, and with plinth - elevated load on the plinth-
- Ethernet communication port.
- EasyRUN browser menu.
- Provided with inputs for validation probes.

Main options

- Air detector (manual and automatic version).
- Connectivity with monitoring and traceability softwares.
- USB port for downloading cycle history.
- Supplies alarm.
- Manual or automatic steam by-pass.
- Connection to automatic loading and unloading system.
- EasyCHECK: integrated electronic device that allows the B&D Test to be carried out without test pack, verifying the correct elimination of air and adequate steam penetration into the chamber.
- Recording and graphic visualization by means of video-recorder.
- Weekly programming of the cycle start.
- Automatic auto power off at the end of the cycle.
- Connection to external cooling systems, allowing large water savings.

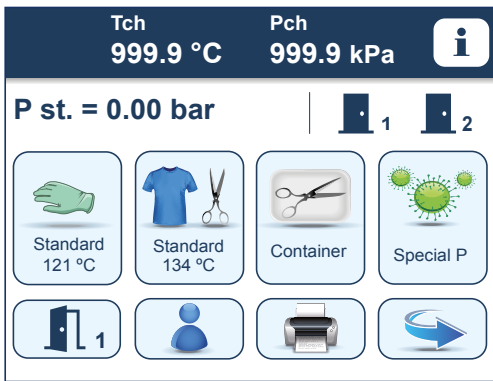


Pit sterilizer loading solution

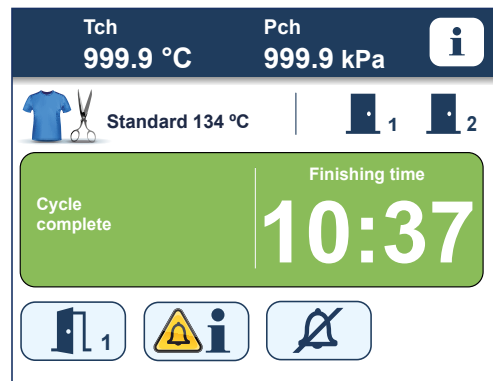


Floor sterilizer loading solution

Model	S2006V-1	S2006V-2	S2009V-1	S2009V2	S2012V-1	S2012V-2	S2018V-1	S2018V-2
Technical specifications	1 door	2 doors	1 door	2 doors	1 door	2 doors	1 door	2 doors
Total dimensions (mm)								
Height	1860	1860	1860	1860	1860	1860	1860	1860
Width	1800	1800	1800	1800	1800	1800	1800	1800
Depth	1250	1250	1570	1570	1900	1900	2570	2570
Chamber dimensions (mm)								
Height	1200	1200	1200	1200	1200	1200	1200	1200
Width	700	700	700	700	700	700	700	700
Depth	750	750	1070	1070	1400	1400	2070	2070
Power (kW)	5	5	5	5	5	5	7	7
Capacity in Ster. Module (S.M)	6	6	9	9	12	12	18	18
Chamber volume (liters)	625	625	892	892	1166	1166	1725	1725
Net weight (kg)	1525	2000	1700	2150	1850	2325	2300	2800

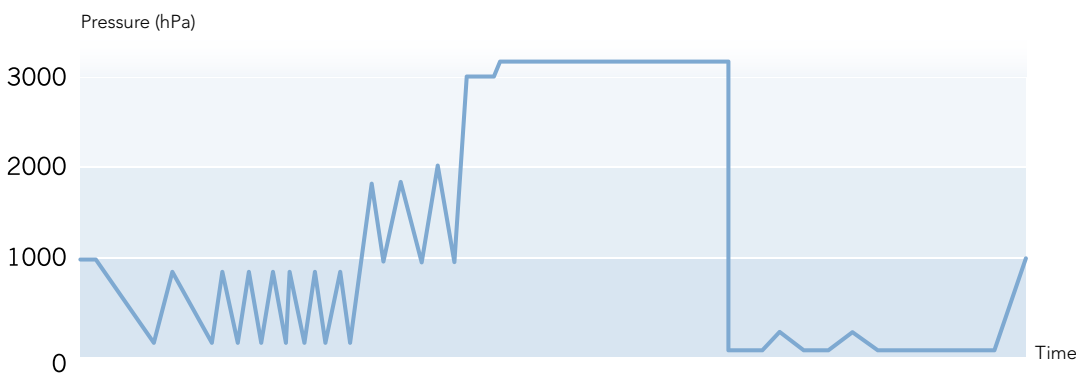


Program selection menu



Cycle complete screen

Chart (Pressure profile) of a production cycle:



S2000 standard programs

Production programs	Application
Standard 134 °C	For packed materials (solid instruments or with cavities)
Standard 121 °C	For packed thermosensitive materials
Containers 134 °C	For packed materials (solid instruments or with cavities) or heavy loads in baskets or containers
Rapid 134 °C	For solid materials simple packing (one layer)
Special P 134 °C	For materials likely to be contaminated with prions (*)
Test programs	Application
Vacuum Test	Check the chamber tightness
B&D Test	Ensure the correct air removal and the steam penetration on the load
Preheating	Preheat the chamber (at beginning of work day)

(*) It should not be assumed that prions can be inactivated by treating them with this program alone. As recommended by WHO, a proper pre-treatment will be required with this program, prior to sterilization.

Additionally, other optional programs are available (Open Liquids, Silicone Implants, steam Disinfection) and extra ones according to customer request.



Innovation is the way forward

Since the company's foundation more than 50 years ago, our mission has been to provide the best service, bringing our knowledge and field experience to our customers to facilitate their daily work, allowing them to be efficient in the production whereas keeping rigorously the quality.

MATACHANA has a worldwide presence, with offices based in Spain, France, Germany, Italy, United States, Argentina, Malaysia and China, or through its distributors in over 110 countries.

In MATACHANA we are aware that Training and Service contribute decisively to achieve customer satisfaction. For this reason, we have always invested in the development of these two areas of activity, which enables a direct contact with customers and help us to develop together a continuous improvement process.

Technical Engineering Support

An assistance provided by engineers, highly skilled expert technicians and support staff, all committed to ensure the proper equipment operation and condition.

MIEC, training center

As we feel seriously committed and liable for achieving the optimum operation from the MATACHANA equipment, we invest in the training of future users, proposing a service of educational courses to all our customers on a regular basis and in the 5 continents.

Environmentally friendly

The devices are designed and manufactured using the latest technologies on the market to achieve the best results in terms of energy savings and reduction in water consumption. Our Production Center located in Castelldefels (Barcelona) complies with the ISO 14001 Environmental Management System and ISO 50001 Energy Management.

Quality

The MATACHANA devices are developed, manufactured and tested within a strict quality control according to the international Standards ISO 9001 and EN ISO 13485 for the quality management of medical devices.

●●● matachana | **+50** YEARS | Experience that improves lives

Matachana Headquarters

Almogàvers, 174
08018 Barcelona · Spain
Tel. (+34) 93 4868700
www.matachana.com

Matachana France

Europarc · 5 allée des Saules
94043 Créteil Cedex · France
Tel. (+33) 1 41941780
www.matachana.fr

Matachana USA

300 North Pottstown Pike,
Suite 110
Exton, PA, 19341, USA
Tel. (+1) 484 8732763
www.matachana.com

Matachana Asia Pacific

7-1, Tower 3, Avenue 3, The Horizon,
Bangsar South, No. 8 Jalan Kerinci
59200, Kuala Lumpur, Malaysia
Tel. (+60) 3 22423250
www.matachana.com

Matachana Germany

An der Trave 14
23923 Selmsdorf · Germany
Tel. (+49) 451 280720
www.matachana.de

Matachana Italy

Via Berlino, 6 loc. Zingonia
24040 Verdellino (BG) · Italy
Tel. (+39) 035 883122
www.matachana.it

Matachana Argentina

Lincol 2572 · Villa Maipu,
(B1650KED) San Martín
Buenos Aires · Argentina
Tel. (+54) 11 48390880
www.matachana.com

Matachana China

Suite 1125, 11 Floor, Garden Square
No. 968 West Beijing Road, Shanghai
200041, P. R. of China
Tel. (+86) 21 52037677
www.matachana.com