

ESCO
SCIENTIFIC



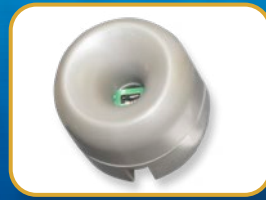
Labculture® G4

Class II Biological Safety Cabinets

*Energy-efficient, Safe, and Ergonomic
Biosafety Cabinet in the World*



LABCULTURE® PLUS G4 (LA2-EU G4) CLASS II BIOSAFETY



Airflow Sensor

- Monitors real-time airflow for safety
- Alert the user if airflow is insufficient

USB Port, RJ45, and Zero Volt Relay Contact

- USB Port / RJ45 to send operational information to Building Management System (BMS)
- Zero Volt Relay Contact to turn ON/OFF exhaust blower and signal the building alarm



Centurion 7" Capacitive Touchscreen Controller

- Displays all safety information on one large screen
- Shows cabinet parameters with intuitive 3D illustration
- Easy to use menu, similar to Smart Phone Apps
- Large buttons, easy to operate when wearing gloves
- Self-guidance to users to deal with specific situations
- Centered and angled down for easy reach and viewing
- Optional: 21 CFR Part 11 Compliance

Motorized Window



- Aerosol tight window seal
- Window automatically stops at safe operating height
- Conveniently move the window by fingertip
- Tilttable Sash for easy glass cleaning

Unique Stainless Steel and Glass Hybrid Wall (E-Series)

- Large corner radius for easy cleaning
- Easy to reach service fixture and outlets
- Stainless steel side wall is available (S-Series)
- Hole-free side glass for increased safety



User-friendly Work Tray

- Largest useable area in the market
- Recessed to contain spillage
- Sloped perimeter for easy cleaning
- Large, easy to clean tray handle
- V-shaped grill allowing efficient inflow



Raised Arm Rest

- Prevent grille blocking
- Comfortable working posture
- Durable stainless steel construction



Ergonomic Work Zone

- 10° angle to optimize user comfort, reduce glare, and maximize reach into the work area
- Brightly illuminated with >1200 lux (111 ft. cd)
- Industry-leading dimmable LED for optimum work comfort
- Airtight seal port for cable/tube exit protected by a negative pressure side wall



Esco Labculture® Plus G4 Class II Biosafety Cabinet Available in 3 feet, 4 feet, 5 feet, and 6 feet models.



EN12469 TUV NORD

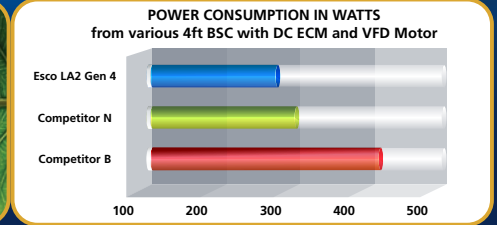
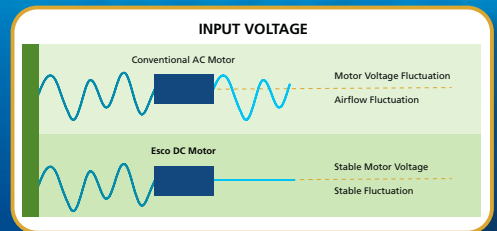
 Certified by TÜV NORD, Germany

 for compliance to DIN EN 12469

CABINET, FEATURING ADVANCED TOUCHSCREEN CONTROLLER

Dual Energy-efficient DC ECM Blower

- The leading energy efficient Class II Biosafety Cabinet in the world with 70% energy savings compared to AC motor
- Stable airflow despite building voltage fluctuations and filter loading
- Standby mode to further reduce power consumption by 80%



Advance Filtration System

- 10x Filtration efficiency of HEPA filter
- Creates ISO Class 3 work zone instead of Industry-standard ISO Class 5
- Same 10 years filter life and replacement cost as HEPA filters



Dimmable LED

- Save energy and optimize work comfort



Removable Paper Catch

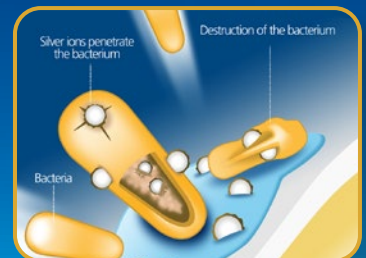
- Prevent objects from being pulled into blower plenum
- Removable for easy cleaning
- Optional pre-filter can be fitted



Tray Support Beams

- Support work tray evenly for less vibration
- Cleaning holder to easily wipe the drain pan

**Available to S-series only*



ISOCIDE™ Powder Coat

- Silver-ion impregnated powder coat
- Inhibits microbial growth to improve safety
- Prevents the plenum from becoming biohazard landfill

Certification

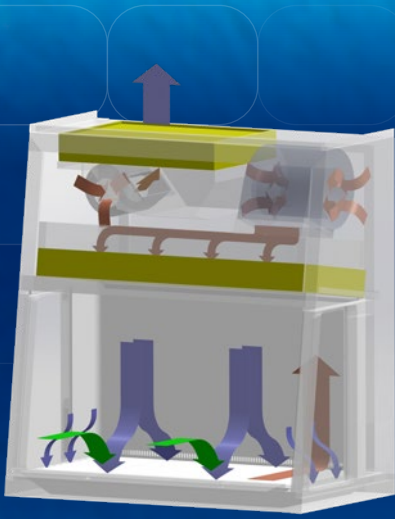
| Standards Compliance | Performance | Air Quality | Filtration | Electrical Safety |
|----------------------|-----------------------------|--|---|---|
| | EN 12469, TUV Nord, Germany | ISO 14644.1, Class 3, Worldwide, US Fed Std 209E, Class 1 USA, JIS B9920, Class 3, Japan | EN-1822 (H14), Europe, IEST-RP-CC001, USA | EN-61010-1, Europe, IEC61010-1, Worldwide |

Dynamic Chamber™

- Blower plenum and side walls are surrounded by negative pressure
- Prevent contaminants from escaping outside

■ Positive Pressure
■ Negative Pressure

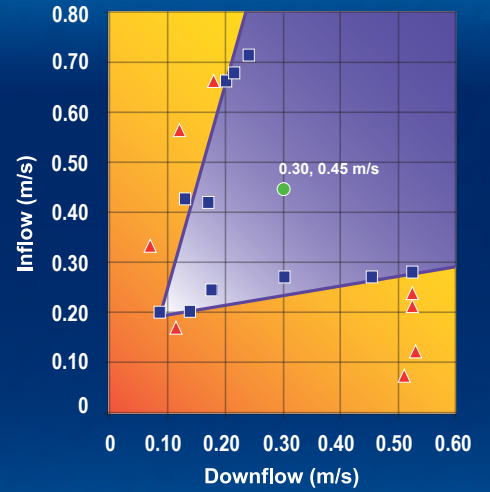




Cabinet Filtration System

- Ambient air is pulled through front grille to create inflow, without going into the work surface. Inflow is joined by half of the downflow, to create front air curtain that is fine-tuned to create a large performance envelope. The combined air stream travels through the back air column towards the blower.
- Approximately 1/3 of the air in the common plenum is exhausted through the ULPA filter to the room. The remaining 2/3 of the air is passed through the downflow ULPA filter and into the work area as a vertical laminar flow air to create ISO Class 3 work surface and prevents cross contamination.
- Near the work surface, the downflow splits. About half goes to the front grille, and half goes to the rear grille. A small portion enters the side capture zones to prevent dead air corners (small blue arrows).
- The design was optimized to give large performance envelope, that provides operator and product protection at wide Inflow and Downflow variation from the Nominal point.

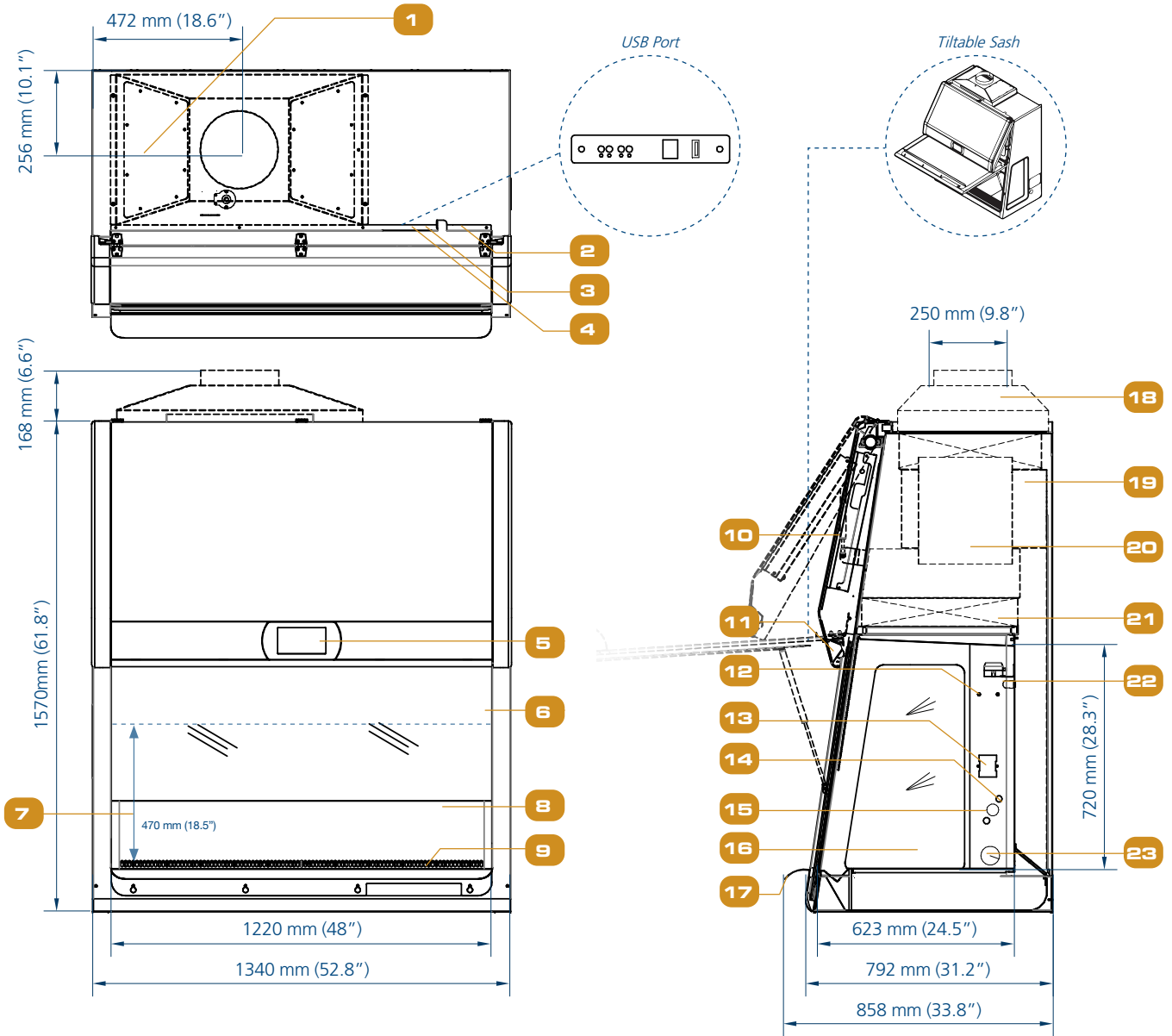
Performance Envelope Test of LA2-EU



- Nominal Airflow
- Personnel / Product Protection
- Area of Personnel / Product Protection
- ▲ No Personnel / Product Protection
- Area of no Personnel / Product Protection

- H14-filtered air
- Unfiltered / potentially contaminated air
- Room air / Inflow air

Engineering Drawing



1. Exhaust Airflow Sensor
2. Power Inlet
3. Zero Volt Relay Contact
4. USB Port
5. Centurion Touchscreen Controller
6. Angled Sash Glass Window

7. Max. Sash Opening
8. Single-piece Stainless Steel Back Wall
9. Single-piece Stainless Steel Work Tray
10. Electrical Panel
11. Dimmable LED Lamp
12. IV Bar Retrofit Kit Provision

13. Electrical Outlet Provision
14. Service Fixture Retrofit Kit Provision
15. VHP Port In (Optional)
16. Tempered Side Glass
17. Stainless Steel Arm Rest
18. Exhaust Collar (optional)

19. Exhaust Filter
20. DC-ECM Blower
21. Downflow Filter
22. UV Lamp Provision
23. Cable Port (right side only)

TECHNICAL SPECIFICATIONS

| Labculture® Class II 220-240 VAC, 50/60 Hz | Glass Side Walls | LA2-3E8-EU G4 2011682 | LA2-4E8-EU G4 2011684 | LA2-5E8-EU G4 2011686 | LA2-6E8-EU G4 2011688 |
|--|--------------------------------|---|---|---|---|
| | Stainless Steel Side Walls | LA2-3S8-EU G4 2011683 | LA2-4S8-EU G4 2011685 | LA2-5S8-EU G4 2011687 | LA2-6S8-EU G4 2011689 |
| Nominal Size | | 0.9 meter (3') | 1.2 meter (4') | 1.5 meter (5') | 1.8 meter (6') |
| External Dimensions (W x D x H) | Without Optional Base Stand | 1035 x 858 x 1570 mm (40.7" x 33.8" x 61.8") | 1340 x 858 x 1570 mm (52.8" x 33.8" x 61.8") | 1645 x 858 x 1570 mm (64.7" x 33.8" x 61.8") | 1950 x 858 x 1570 mm (76.8" x 33.8" x 61.8") |
| Internal Dimensions (W x D x H) | | 915 x 623 x 720 mm (36.0" x 24.5" x 28.3") | 1220 x 623 x 720 mm (48.0" x 24.5" x 28.3") | 1525 x 623 x 720 mm (60.0" x 24.5" x 28.3") | 1830 x 623 x 720 mm (72.0" x 24.5" x 28.3") |
| Usable Work Area | | 0.45 m ² (4.8 sq.ft.) | 0.62 m ² (6.7 sq.ft.) | 0.76 m ² (8.2 sq.ft.) | 0.93 m ² (10.0 sq.ft.) |
| Sash opening | | 200 mm (8") | | | |
| Maximum Sash Opening | | 470 mm (18.5") | | | |
| Average Airflow Velocity | Inflow | 0.45 m/s (88.5 fpm) | | | |
| | Downflow | 0.32 m/s (63 fpm) | | | |
| ULPA Filter Typical Efficiency | | 99.999% efficiency at 0.3 to 0.1 µm | | | |
| Sound Emission (dBA)* | | 54.8 | 55.0 | 57.5 | 58.0 |
| Light Intensity | LED Lamp Intensity | >1000 Lux (>93 foot-candles) | | | |
| | Optional UV Lamp | 253.7 nm | | | |
| Electrical Requirements** | Nominal Power Consumption | 167 W | 178 W | 285 W | 315 W |
| | Heat Load | 570 BTU/ Hr | 607 BTU/Hr | 972 BTU/Hr | 1075 BTU/Hr |
| Cabinet Construction | Main body | Electro-galvanized steel with white oven-baked epoxy-polyester Isocide™ antimicrobial powder-coated finish, 1.5 mm (0.06") / 16 gauge thick | | | |
| | Work Zone | Stainless steel Type 304 with No.4 finish, 1.5 mm (0.06") / 16 gauge thick | | | |
| | Side Walls | E Series | UV absorbing tempered glass, 6 mm (0.2"), colorless and transparent | | |
| | | S Series | 1.5 mm (0.06") 16 gauge stainless steel, type 304, with 4B finish | | |
| Net Weight | | 300 Kg (661 lbs) | 330 Kg (727.5 lbs) | 370 Kg (816 lbs) | 460 Kg (1014 lbs) |

*Noise reading in open field condition / anechoic chamber. Noise reading in normal room varies by room size, layout, and background noise, but may reach roughly 3-4 dBA above these values.

**Electrical power consumption is an measurement of new unit with clean filter operated within nominal setpoint. Result per unit may vary.

Options and Accessories

| | | | | | |
|--------------------------------------|--------------------------|---------------------------------------|---------------------------|---------------------------|---------------------------|
| Anti-blowback Valve 10 inches | 304 Stainless Steel | ABBV-10S 5170354 | | | |
| Exhaust Collar | | ECO-F-LA2-3-G4 5171097 | ECO-F-LA2-4-G4 5171098 | ECO-F-LA2-5-G4 5171099 | ECO-F-LA2-6-G4 5171100 |
| UV Lamp | | UV-15A 5170251 | UV-30A 5170255 | | |
| IV Bar | | IV-910 5170499 | IV-1215 5170231 | IV-1520 5170500 | IV-1825 5170501 |
| Electrical Outlet | Direct Mounted | EO-HC 5170035 | | | |
| | GFCI | EO-GFCI 5170071 | | | |
| Service Fixtures | EU SF-Gas-20 mm | SF-1G20 5170410 | | | |
| | Solenoid Valve | SOLENOID GAS VALVE 230 VAC 5070086 | | | |
| | EU SF-Vacuum-20 mm | SF-1V20 5170457 | | | |
| | EU SF-Air-20 mm | SF-1A20 5170502 | | | |
| | EU SF-Nitrogen-20 mm | SF-1N20 5170503 | | | |
| | EU SF-Water-20 mm | SF-1W20 5170458 | | | |
| | US SF-Universal-20 mm | SF-2U22 5170504 | | | |
| | Copper Piping for SF | CU-Pipe 5170026 | | | |
| SPEU-A & SPEU-B | Support Stand 28" Height | SPEU-3A0 5131343 | SPEU-4A0 5131344 | SPEU-5A0 5131455 | SPEU-6A0 5131456 |
| | Support Stand 36" Height | SPEU-3B0 5131457 | SPEU-4B0 5131458 | SPEU-5B0 5131459 | SPEU-6B0 5131460 |
| Pipette Storage Shelf | 5260327 | | | | |
| Arm Rest Padding | MEWREST 5170127 | | | | |
| Foot Rest | FT-REST 5170492 | | | | |
| Laboratory Chair | ME-LD-AR360 1150006 | | | | |
| IQ OQ Protocol | 9010179 | | | | |



ABBV-



UV_ A-L



IV_



EO-H_



EO-GFCI



SF-1_



SF-2U_



SPEU



Pipette Storage Shelf



MEWREST



FT-REST



ME-LD-AR360



IQOQ

ESCO

LIFESCIENCES GROUP

Improving Lives through Science

ESCO
SCIENTIFIC



- Animal Research Workstation
- Biological Safety Cabinet
- CO₂ Incubator
- Ducted Fume Hood
- Ductless Fume Hood
- Filtered Storage Cabinet
- Laboratory Centrifuge
- Laboratory Oven and Incubator
- Laboratory Refrigerator and Freezer
- Laboratory Shaker
- Laminar Flow Cabinet
- PCR Cabinet
- Powder Weighing Balance Enclosure
- Thermal Cycler
- Ultra-low Temperature Freezer

ESCO
MEDICAL



- Time-Lapse Incubator
- Benchtop Incubator
- ART Workstation
- CO₂ Incubator
- Anti-Vibration Table
- Gas Analyser

ESCO
Healthcare | *"Discovery to Delivery"*



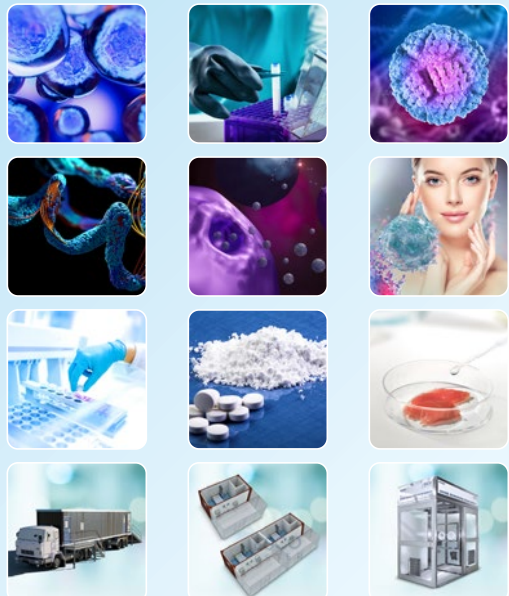
ESCO
PHARMA

ESCO
TaPestle

ESCO
VACCI XCELL

Pharmaceutical Manufacturing, Pharmacy Compounding,
and Bioprocessing Tools

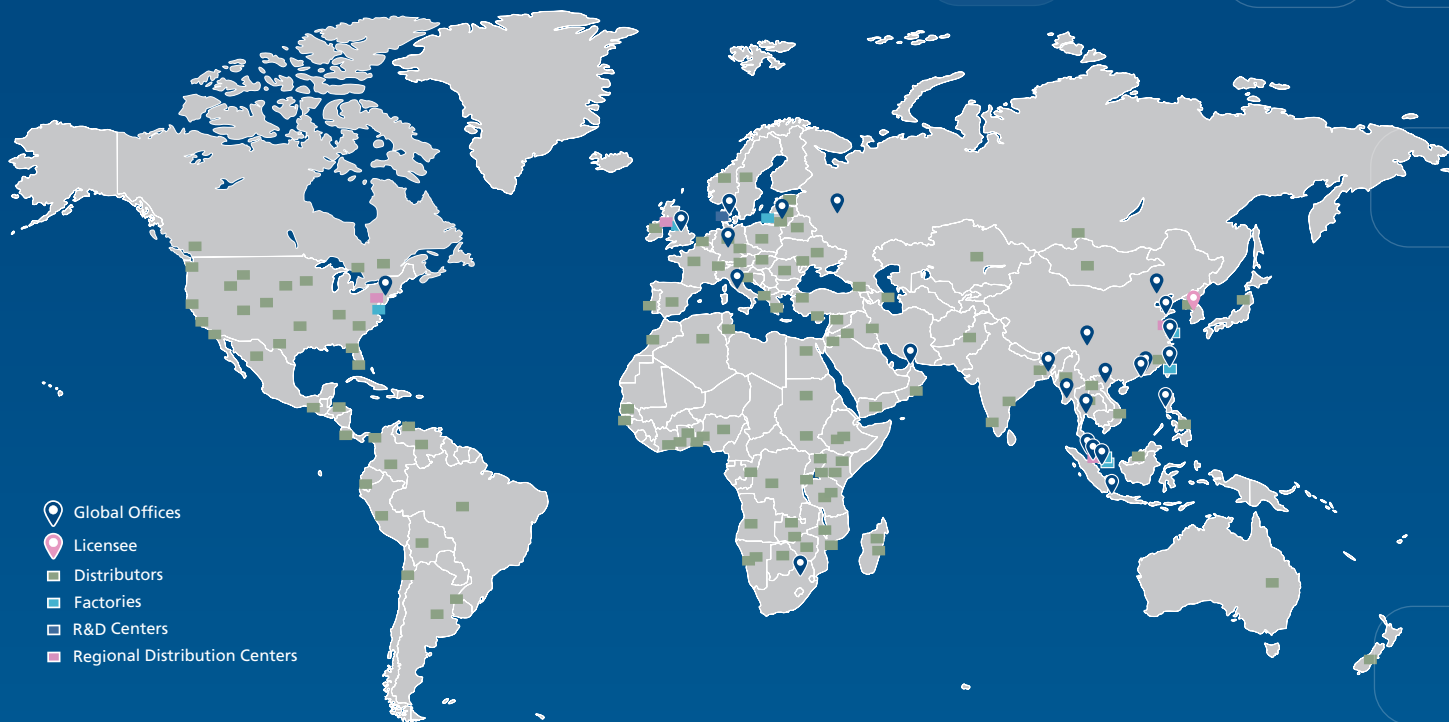
ESCO
ASTER



CRDMO Services

ESCO LIFESCIENCES GROUP

42 LOCATIONS IN 21 COUNTRIES ALL OVER THE WORLD



-  Global Offices
-  Licensee
-  Distributors
-  Factories
-  R&D Centers
-  Regional Distribution Centers

*Follow us on social media, download our apps,
and scan the QR code for more info.*



@EscoLifesciences



@EscoLifesciences



@EscoLifesci



@Esco



@EscoLifesciences



@EscoLifesciences



Esco Lifesciences



Esco Lifesciences

ESCO

LIFESCIENCES GROUP

Esco Micro Pte. Ltd. • 21 Changi South Street 1 • Singapore 486 777
Tel +65 6542 0833 • mail@escolifesciences.com
www.escolifesciences.com

Esco Technologies, Inc. • 903 Sheehy Drive, Suite F, Horsham, PA 19044, USA
Tel: +1 215-441-9661 • eti.admin@escolifesciences.com

Esco Lifesciences Group Offices: Bangladesh | China | Denmark | Germany | Hong Kong | India | Indonesia | Italy | Japan | Lithuania | Malaysia | Myanmar | Philippines | Russia | Singapore | South Africa | South Korea | Taiwan | Thailand | UAE | UK | USA | Vietnam

9010627_1A2-EU_Labculture Gen 4-BSC-A4_VA_LR_101823

Esco can accept no responsibility for possible errors in catalogues, brochures and other printed materials. Esco reserves the right to alter its products and specifications without notice. All trademarks and logotypes in this material are the property of Esco and the respective companies.