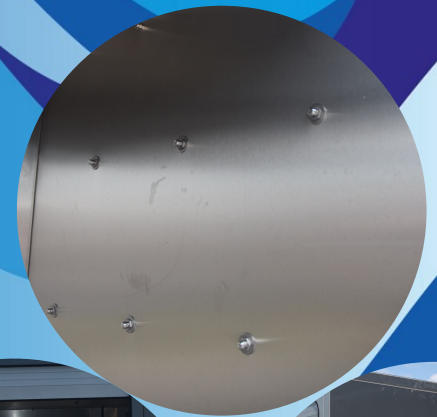




RehaWash washing cells

- ✓ Made in the EU
- ✓ Future proof
- ✓ Fully inox
- ✓ Hygienic washing cabin
- ✓ Intuitive touchscreen
- ✓ Led bars to monitor the processes
- ✓ Automatic data storage
- ✓ Sustainable

Multiline ML600, ML600 D, M600 DT



ML600 (DT)- specifications & features

Programs

cleaning program without disinfection (warm water supply / 50°C)	3 programs / time : 13-17 minutes
cleaning programs with disinfection (warm water supply / 50°C)	3 programs /time 15-19 minutes
self-disinfection program (warm water supply / 50°C)	1 program / time approx. 20 minutes
cold water supply + 24kW water heater	extra time approx. 5 -6 minutes

Optional

custom made programs possible	✓
data transfer possible on request	✓
with condense dryer (option)	✓
cleaning temperature	adjustable (max.55 °C)
possibility of disassembly	✓

Water & electricity

water consumption pro cycle	50 Litre
pressure water supply	2 - 3 bar
energie consumption pro cycle (approx)	2,6 kW/h
connection electricity	1x 400 Volt / 32 Ampere or 63 Ampere (Combi unit)

Control system

touch display	✓
Information on display (time, program, temperature)	✓
technical documentation (P & ID screen)	✓
counter wash cycles (wash-ID on touch display)	✓
data transfer (USB port / LAN port)	✓
rolling door(s)	controlled by touch screen / automatically
number of rolling doors (electrical)	1 or 2

ML600 (DT)

Security

emergency button (near doors)	✓
main switch electricity	✓
automatic stop when doors open	✓
empty indicator jerrycans	✓
noise in dB(A)	approx. 63
info about self-disinfection (option)	✓

Dimensions

dimensions LxBxH outside (without technical section)	2800 x 1268 x 2513 mm
dimensions LxBxH outside (with technical section)	2800 x 1776 x 2513 mm
dimensions LxBxH inside wash cabin	2796 x 1128 x 2195 mm
dimensions LxBxH outside (combi unit including technical section)	2800 x 1776 x 2863 mm
dimensions LxBxH outside technical part - left or right side)	1400 x 510 x 1530 mm
dimensions on request customer	✓
delivery in parts / assemble at end user's place	✓
assembly in a pit	✓
dimensions rolling door BxH	980 x 1860 mm
entrance height (floor - floor washing cabin)	min. 0 (in pit) to max. 320 mm

Maintenance

after number of cycles or ones a year	3.000
Information on display	✓
easy cleaning filter	✓
material filter	stainless steel
software modifications on request (option)	✓
error indicator	led strip in roofpanel / touch screen

Warranty

period	One year. Two years in combination with maintenance by RehaWash
--------	---

2023-10
Vs 1.0

All data and pictures on this leaflet are only for information



RehaWash International B.V.
Scholtensoven 7
7621 HA Borne
Netherlands
+31 (0)74 2042004

info@rehawash.com
www.rehawash.com