



Steam Sterilizers  
**Matachana SC500 RBE**

# Ideal solution for potentially infectious waste sterilization

The high versatility and operational simplicity of the Series SC500 RBE turns into the ideal sterilizer to treat healthcare waste or contaminated samples in a wide range of sterilizing centres, hospitals, microbiological laboratories, universities and research centres.

The MATACHANA Series SC500 RBE is a medium/high production capacity sterilizer that comprises several models: chamber volume between 252 and 321 liters, one or two doors, with or without steam generator.

## Features

- Chamber and one-section-only jacket made of high-quality stainless steel 1.4404 (AISI-316L).
- Automatic-pneumatically activated vertical sliding doors with safety Interlock and stop button.
- Control by industrial micro-computer and user friendly colour touch screen. Alphanumeric printer for cycle data recording.
- Stainless steel connection of steam pipes, 1.4404 (AISI-316L) quality.
- Vacuum by means of ejector (Venturi system): low maintenance and noiseless.
- Independent water tanks for vacuum system and steam generators, with cooling coil for recovering heat from condensates. Water consumption savings (when the external cooling system option is installed).
- Mechanized door gasket groove (longer gasket lifespan and easy maintenance).
- Air treatment system. It is extracted from the chamber through a HEPA absolute filter, with condensate treatment inside the chamber, to ensure a correct contamination-free sterilization.

## Programs

- 2 test programs (Vacuum Test & Bowie & Dick Test),
- 2 programs specially designed for the treatment of medical waste at 134 °C: with 15 and 30 minutes sterilization, in accordance with configuration and load type.

Models	SC501VR-1 SC501ER-1	SC501VR-2 SC501ER-2	SC502VR-1 SC502ER-1	SC502VR-2 SC502ER-2
<b>Technical specifications</b>	1 door	2 doors	1 door	2 doors
Total dimensions (mm)				
Height, excluding filter (*)	1824	1824	1824	1824
Width	900	900	900	900
Depth	1342	1355	1622	1635
Chamber dimensions (mm)				
Height	500	500	500	500
Width	500	500	500	500
Depth	1020	1020	1300	1300
Power (kW)				
WITH generator (ER)	21	21	2	21
WITHOUT generator (VR)	2	2	2	2
Chamber volume (liters)	252	252	321	321
Load capacity/cycle (kg) (**)	20-40	20-40	30-50	30-50

(\*) Overall sterilizer size, including removable HEPA filter: 2500 mm

(\*\*) Capacity calculated according to waste density 15-25%

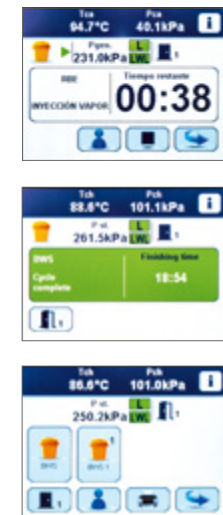


Aware of the problems which hospitals and research centers are currently facing, MATACHANA has developed a system which integrates itself within the special biocontaminated waste circuit.

- Classification and collection of the waste in suitable receptacles at the places where it is generated.
- Transportation flow within the hospital and its treatment in the sterilizer have all been thoroughly studied to elaborate a system that is simple and easy to install.
- The sterilization process converts the special waste into urban grade waste.
- The post sterilization process reduces the volume of waste treated.

## All the power of technology in sterilization

- Working with the sterilizer is very easy. The user operates from the touch screen. Starting from the main menu, the screen guides the user, through the Submenus, toward the operations required.
- The follow-up of the cycle can be carried out directly from the screen, given that it allows a graphic visualization of the process in "real time".
- The control unit can integrate the Teleservice option ("on line" remote maintenance) and is provided with access doors to connect it to the PC and the bar code reader (optional).



### Environmental Management

Our constant eagerness for the technological innovation aimed at the sustainability and improvements of our products has taken us to control minutely the life cycle of our devices as well as their environmental impact. Such a control has allowed us to improve the manufacturing process of our devices obtaining considerable energetic saving improvements with regards to previous series.



## MATACHANA GROUP

# Innovation is the way forward

Since our foundation 50 years ago, our mission has been to provide the best service, bringing our knowledge and field experience to our customers to facilitate their daily work, allowing them to be efficient in the production whereas keeping rigorously the quality.

Our history has taken us from the beginnings in 1962 to the transformation in 2000 in MATACHANA GROUP, with its subsidiaries in Germany, France, USA, Argentina, Malaysia and China, as well as the collaboration of direct distributors in over 110 countries.

In MATACHANA GROUP we are aware that Training and Service contribute decisively to achieve customer satisfaction. For this reason, we have always invested in the development of these two areas of activity, which enables a direct contact with customers and help us to develop together a continuous improvement process.

### Technical Engineering Support

An assistance provided by engineers, highly skilled expert technicians and support staff, all committed to ensure the proper equipment operation and condition.

### Training Academy



Committed to the responsibility to obtain the optimum operation from our equipment, in MATACHANA GROUP we invest in the training of future users.

In addition, we offer training courses regularly in the 5 continents, providing this service to all our customers.

### Environmentally friendly

The sterilizers are designed and manufactured using the latest technologies on the market to achieve the best results in terms of energy savings and reduction in water consumption.

Our Production Center complies with the ISO 14001 Environmental Management System and ISO 50001 Energy Management.

### Quality

The MATACHANA devices are developed, manufactured and tested within a strict quality control according to the International Standard ISO 9001.