

Steam sterilizers
Matachana S1500 I

Large capacity Steam Sterilizers

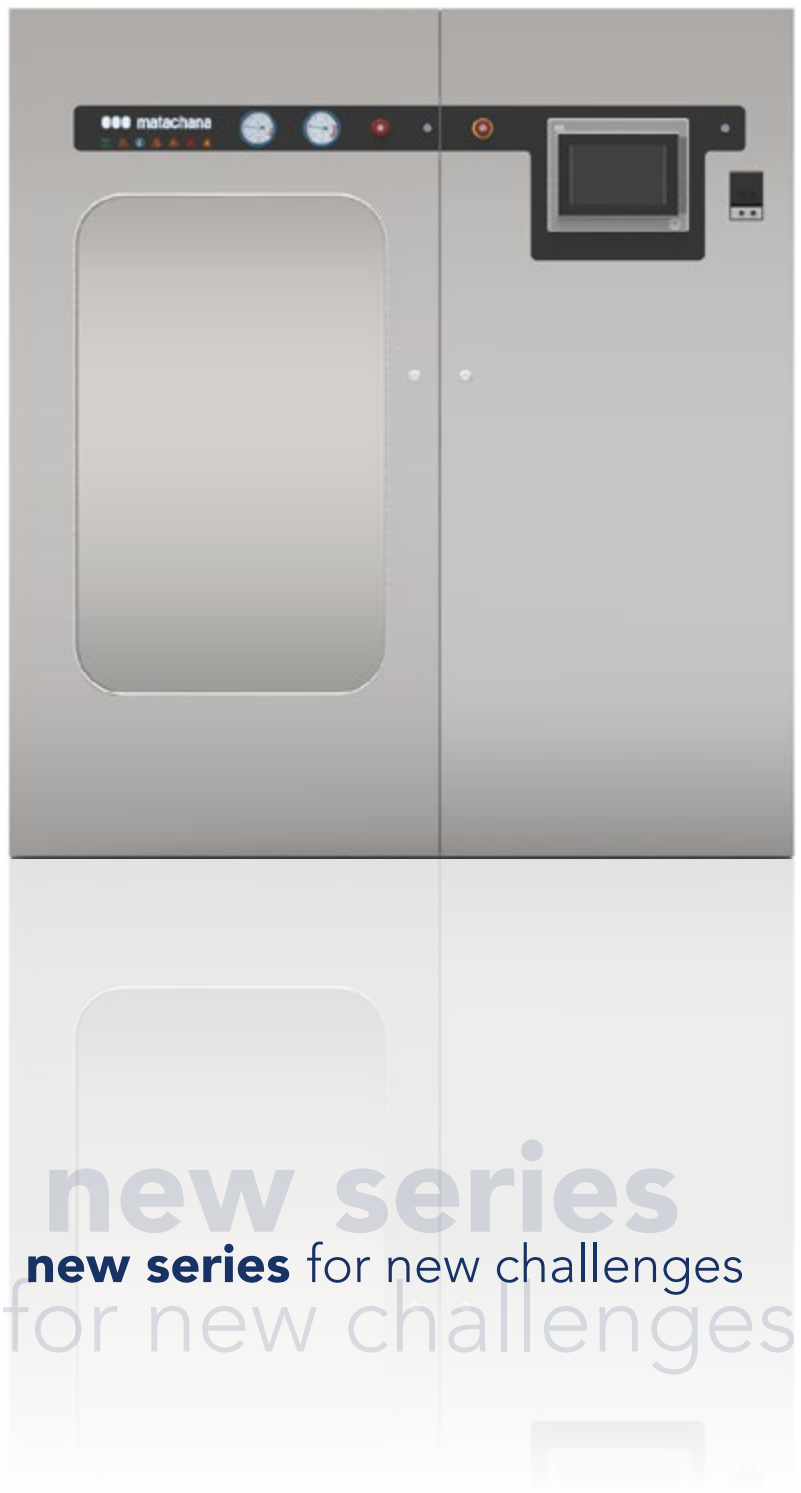
MATACHANA provides the LIFE SCIENCE sector with a wide range of devices whose features are a worldwide reference, both for their quality and their performance. Our aim is to satisfy our customers' expectations and guarantee the durability of our sterilizers.

Steam sterilization in research centers, industry, laboratories and biosafety possesses very particular specifications and requirements. MATACHANA sterilizers are designed to offer high quality equipment and provide maximum performance in this type of centres.

The **S1500 I Series** is a family of devices that complements the line of high-capacity steam sterilizers. These units combine productivity and cost-effectiveness.

As a manufacturer, we adapt the constructive characteristics of our sterilizers to the requirements and operating conditions of our customers.

Our **EXPERIENCE**
is a **GARANTEE of success**
for your project

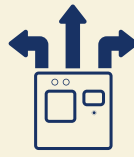


new series
new series for new challenges
for new challenges



MATACHANA S1500 I Series

Flexibility, Ergonomics, Eco-efficiency



FLEXIBILITY

Flexibility in the selection of a wide range of sterilizers with different chamber sizes and volumes, which cover and respond to any specific need of our customers.



ERGONOMICS

Ergonomics through user-friendly loading systems, facilitating the dynamics and workflow in the different areas whereas providing practical and specific solutions for each project.



ECO-EFFICIENCY

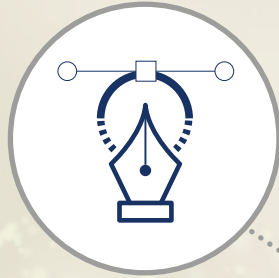
Committed to maintenance and environmental protection, the S1500 I sterilizer manufactured with recyclable materials, provides reduced energy consumption, which helps our customers to improve the eco-efficiency of their installation.



Life Science
Steam sterilizers S1500 I

www.matachana.com

Multiple benefits to suit all needs

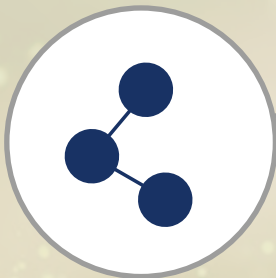


DESIGN

- New smart, innovative and neat design that facilitates cleaning and conveys robustness; unmistakable characteristics of any MATACHANA equipment
- Stainless steel front with backlit panel and user interface
- Compact design with minimised footprint
 - Designed with carefully selected quality materials

EASE OF USE

- EasyRUN simple and intuitive user interface with 10.4" HMI control panel with flexible, dynamic control and visualisation technology
- Status of the device visible from a distance thanks to the backlit front panel
 - Easy & quick to learn for users



CONNECTIVITY

- Possibility of connection via Ethernet or Wifi with remote diagnosis
- Compatible with EasyVIEW® software for equipment and process monitoring
- User interface for configuring reliable OPC and MODBUS connections to connect to the customer's HMI and SCADA, exchanging data in real time



DOCUMENTATION

- Integrated thermal printer
- USB port for downloading cycle history
- Large capacity internal memory with track record of the last 1000 cycles
- Availability of device's qualification and validation DQ-IQ-OQ-PQ
- Control system option for 21CFR-11 compliance





EASY MAINTENANCE

- Easily accessible components in the service area
- Front service door (loading area) assembled on EN 1.4301/AISI 304 quality stainless steel panels
- Components and instruments of renown brands that are commonly found on the market
- Surfaces or areas specifically designed to optimise maintenance times and tasks



ECO-FRIENDLY

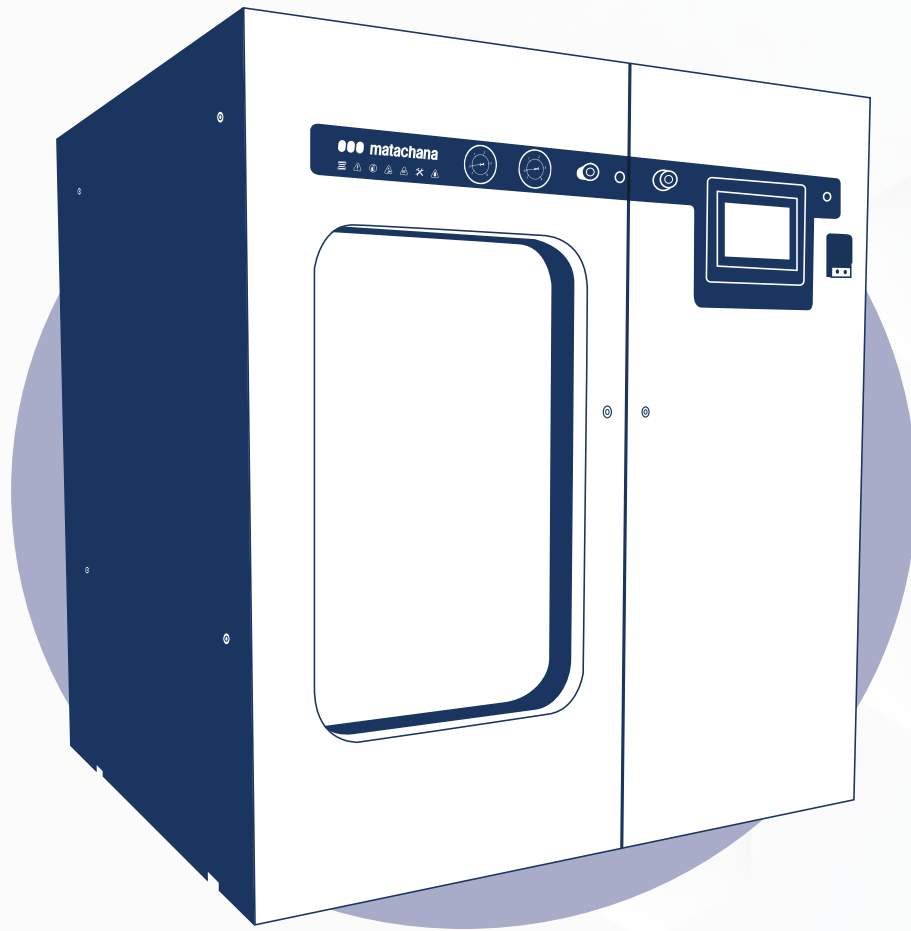
- Autostart and auto shut-off that allows a more ecological management of the sterilizer's power consumption
- Built-in heat recovery system
- Vacuum system specially designed to reduce water consumption
- Connection to external water recovery systems that reduce up to 99 % of the total water consumption of the device
- Smart power consumption manager



ERGONOMICS

- Automatic loading and unloading systems available
- Optimised loading and unloading systems for easy handling. Specially designed to operate with bulky and heavy loads
- Sterilizable sealed transport systems that reduce the number of load handling operations

Technical data S1500 I



EC models	1506V-1I 1506V-2I		1506E-1I 1506E-2I		1509V-1I 1509V-2I		1509E-1I 1509E-2I	
USA models	NA15.600LV-1A NA15.600LV-2A		NA15.600LE-1A NA15.600LE-2A		NA15.800LV-1A NA15.800LV-2A		NA15.800LE-1A NA15.800LE-2A	
Chamber dimensions	mm	in	mm	in	mm	in	mm	in
Width	670	26 3/8	670	26 3/8	670	26 3/8	670	26 3/8
Height	1100	43 1/4	1100	43 1/4	1100	43 1/4	1100	43 1/4
Depth	770	30 3/8	770	30 3/8	1100	43 1/4	1100	43 1/4
Total dimensions	mm	in	mm	in	mm	in	mm	in
Width	1800	70 7/8	1800	70 7/8	1800	70 7/8	1800	70 7/8
Height	2000	78 3/4	2500	98 3/8	2000	78 3/4	2500	98 3/8
Depth	1240	48 7/8	1240	48 7/8	1570	61 3/4	1570	61 3/4
Chamber volume	liters	ft ³	literss	ft ³	liters	ft ³	liters	ft ³
	567	20	567	20	810	28.6	810	28.6
Net weight	kg	lb	kg	lb	kg	lb	kg	lb
1 Door	950	2100	1050	2350	1025	2300	1125	2500
2 Doors	1150	2550	1250	2800	1225	2700	1325	2950
Power	kW		kW		kW		kW	
CE models	2		39		2		51	
USA models	3		39		3		51	
Voltage / Frequency	3~ / 50-60 Hz				3~ / 50-60 Hz			

Remarks: Mod. "V" Mains steam supply, Mod. "E" With built-in steam generator.
"1" and "2" indicate the number of doors.

MATACHANA integral solutions in Life Science

Projects strongly inspired by our know-how. Perfect blend of **time, experience and quality** to match the wishes and needs of our customers.



1512V-11 1512V-2I		1512E-11 1512E-2I		1515V-11 1515V-2I		1515E-11 1515E-2I		1518V-11 1518V-2I		1518E-11 1518E-2I	
NA15.1000LV-1A NA15.1000LV-2A		NA15.1000LE-1A NA15.1000LE-2A		NA15.1300LV-1A NA15.1300LV-2A		NA15.1300LE-1A NA15.1300LE-2A		NA15.1500LV-1A NA15.1500LV-2A		NA15.1500LE-1A NA15.1500LE-2A	
mm	in	mm	in	mm	in	mm	in	mm	in	mm	in
670	26 3/8	670	26 3/8	670	26 3/8	670	26 3/8	670	26 3/8	670	26 3/8
1100	43 1/4	1100	43 1/4	1100	43 1/4	1100	43 1/4	1100	43 1/4	1100	43 1/4
1430	56 1/4	1430	56 1/4	1760	69 1/4	1760	69 1/4	2090	82 1/4	2090	82 1/4
mm	in	mm	in	mm	in	mm	in	mm	in	mm	in
1800	70 7/8	1800	70 7/8	1800	70 7/8	1800	70 7/8	1800	70 7/8	1800	70 7/8
2000	78 3/4	2500	98 3/8	2000	78 3/4	2500	98 3/8	2000	78 3/4	2500	98 3/8
1900	74 3/4	1900	74 3/4	2230	87 3/4	2230	87 3/4	2560	100 3/4	2560	100 3/4
liters	ft³	liters	ft³	liters	ft³	liters	ft³	liters	ft³	liters	ft³
1054	37.2	1054	37.2	1297	45.8	1297	45.8	1540	54.3	1540	54.3
kg	lb	kg	lb	kg	lb	kg	lb	kg	lb	kg	lb
1100	2450	1200	2650	1175	2600	1275	2850	1250	2800	1350	3000
1300	2900	1400	3100	1375	3050	1475	3300	1450	3200	1550	3450
kW		kW		kW		kW		kW		kW	
3		63		3		63		3		101	
4		65		4		65		4		88	
3~ / 50-60 Hz				3~ / 50-60 Hz				3~ / 50-60 Hz			

Life Science
Steam sterilizers S1500 I



Innovation is the way forward

Since the company's foundation more than 50 years ago, our mission has been to provide the best service, bringing our knowledge and field experience to our customers to facilitate their daily work, allowing them to be efficient in the production whereas keeping rigorously the quality.

MATACHANA has a worldwide presence, with offices based in Spain, France, Germany, Italy, Argentina and Malaysia, or through its distributors in over 110 countries.

In MATACHANA we are aware that Training and Service contribute decisively to achieve customer satisfaction. For this reason, we have always invested in the development of these two areas of activity, which enables a direct contact with customers and help us to develop together a continuous improvement process.

Technical Engineering Support

An assistance provided by engineers, highly skilled expert technicians and support staff, all committed to ensure the proper equipment operation and condition.

MIEC, training center

As we feel seriously committed and liable for achieving the optimum operation from the MATACHANA equipment, we invest in the training of future users, proposing a service of educational courses to all our customers on a regular basis and in the 5 continents.

Environmentally friendly

The devices are designed and manufactured using the latest technologies on the market to achieve the best results in terms of energy savings and reduction in water consumption. Our Production Center located in Castelldefels (Barcelona) complies with the ISO 14001.

Quality

The MATACHANA devices are developed, manufactured and tested within a strict quality control according to the international Standards ISO 9001.

●●● matachana

Matachana Headquarters

Almogàvers, 174
08018 Barcelona · Spain
Tel. (+34) 93 4868700
www.matachana.com

Matachana France

Europarc · 5 allée des Saules
94043 Créteil Cedex · France
Tel. (+33) 1 41941780
www.matachana.fr

Matachana Germany

An der Trave 14
23923 Selmsdorf · Germany
Tel. (+49) 451 280720
www.matachana.de

Metalarredinox - Matachana Group

Via Berlino, 6 loc. Zingonia
24040 Verdellino (BG) · Italy
Tel. (+39) 035 883122
www.metalarredinox.eu

Matachana Argentina

Lincol 2572 · Villa Maipu,
(B1650KED) San Martín
Buenos Aires · Argentina
Tel. (+54) 11 48390880
www.matachana.com

Matachana Asia Pacific

7-1, Tower 3, Avenue 3, The Horizon,
Bangsar South, No. 8 Jalan Kerinchi
59200, Kuala Lumpur, Malaysia
Tel. (+60) 3 22423250
www.matachana.com