



Steam Sterilizer  
for Pharmaceutical Applications  
**Matachana MPHS**  
**Horizontal Sliding Doors**

# New Generation of Pharmaceutical Steam Sterilizers

## The result of the experience

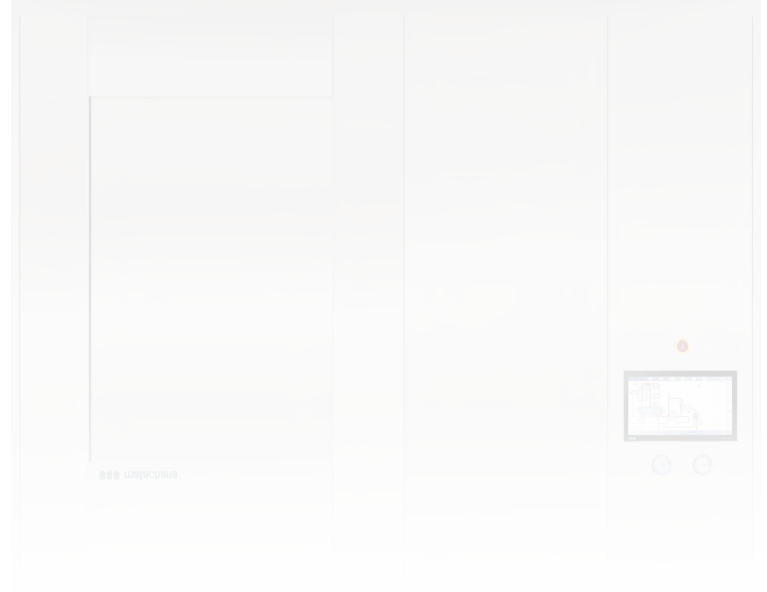
Thanks to more than 50 years of experience working in diverse sterilization technologies, MATACHANA has become a global supplier for the pharmaceutical industry as well as the healthcare, vivarium and laboratory industries. We have gathered all the knowledge to create a new product to be used in the pharmaceutical industry and research, with the aim of providing solutions to the highest demands and quality standards. The MPHS Series combines knowledge of sterilization processes with the search for customized solutions to the emerging needs of the pharmaceutical industry, being able to supply optimized solutions with an innovative product.

## Design as an attitude

The MPHS Series has a completely new design based on the most recognized standards and guidelines used in the pharmaceutical industry. With modular concept thinking and an eye toward customization, our design pays special attention to the interaction between operator and machine. MATACHANA sterilizers focus on ergonomics, user-friendliness and ease of maintenance while also preserving integration with the environment. In addition our compact footprint allows you to locate our units in the most limited space(s).

## Forward-thinking

As a Family owned and operated company, MATACHANA take a far sighted approach to future generations. For this reason, we want to contribute to a more sustainable world. The MPHS concept comes from the result of a responsible management policies of our products, which are manufactured streamlined with materials easily recyclable and an equipment performance environmentally responsible.



focused on  
focused on **innovation**  
**innovation**

# Ahead of the Customer Needs



A customer-oriented philosophy, makes us study each case as unique. MATACHANA advise on the application, product handling, installation and validation of a wide range of processes and technologies.

## EXPERIENCE

Our **50+ years of experience** has taught us to put the needs of our customers first. With equipment currently serving customers worldwide we stand by our products.

## QUICK RESPONSE

Our service network is available worldwide for a **quick response**. Specific agreements provided for a service adapted to your needs.

## KNOW-HOW

With our **deep understanding** of sterilization across a wide variety of applications we will help you **maximize** production with each cycle.

## PERSONALIZED SOLUTIONS

A personal contact available for each unit and project to ensure the success. Our team of experts will assist you in providing customized layouts with **unique solutions** to optimize your resources.

## FLEXIBILITY & RELIABILITY

The highest degree of flexibility is achieved through a customized modular system. Made with high quality materials and manufacturing process. **Quality** is the best guarantee for the future.

## CONFIDENCE

Development and validation according to latest GAMP and cGMP standards. The sterilizers ensure the **compliance** with applicable regulations in the pharmaceutical and biotech facilities.

Steam Sterilizer for Pharmaceutical Applications  
Matachana MPHS Horizontal Sliding Doors

# Further than pharmaceutical industry (GMP applications)

Our expertise in the sterilization process uniquely positions MATACHANA as solution provider within the Pharmaceutical and Research Industries. Combining the company know-how and the personalized attention to our customer needs, we provide cost-effective, safe and reliable solutions.



The MPHS Series follows the pharmaceutical guidelines, regulations and practices to match the quality requirements of our customers  
**cGMP – GAMP – PED – ASME – ASME BPE – ISPE BASELINE – FDA – 21 CFR PART 11**

## VERSATILITY TO ACHIEVE THE EFFECTIVENESS:

The wide range of our solutions allows the adaptation of our equipment features to the load, seeking excellence in each process.

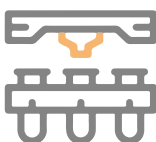
### Areas of Application



Pharmaceutical Production



Research & Development



Industrial Applications

### Variety of process

#### Saturated Steam Processes

- Solid Materials
- Porous Materials
- Open Liquids
- Small Rigid Closed Containers

#### Steam + Air Mixture Processes

- Open Liquids
- Plastic and Glass Closed Containers
- Pre-Filled Syringes
- Blister Packs

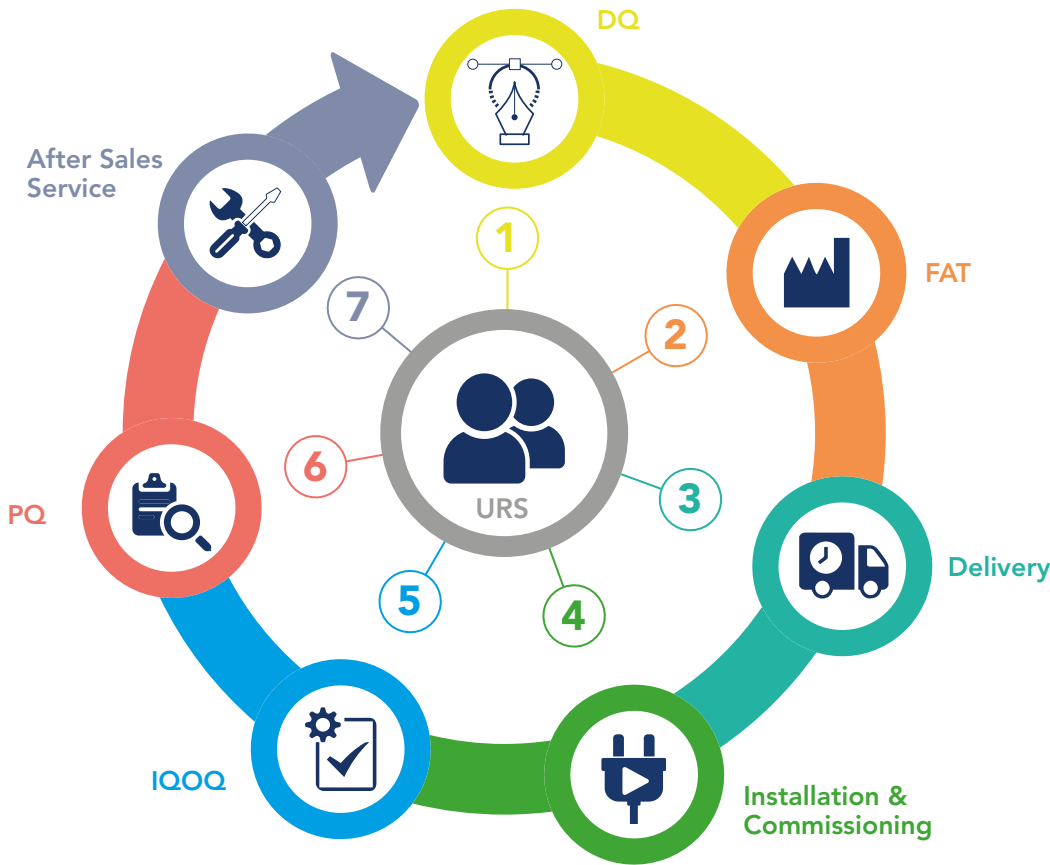
#### Overheated Water Processes

- Plastic and Glass Closed Containers
- LVP
- Blood Plasma Bags

# Project & Quality Management

MATACHANA offers a complete solution for the customer's needs, focusing since the very beginning on the most important item: the User's Requirement Specifications (URS).

Starting with the project analysis, followed by engineering development manufacturing, including the installation and commissioning at client site, our team of experts ensure that the project is carried out precise and exhaustively. Always following the highest quality standards.



## MATACHANA Competence Center

### State-of-the-art of planning and design management.

Our Competence Center, located in Barcelona (Spain), handles all technical aspects originated from the customer's requirements, taking into account your needs with regards to capacity, productivity, efficiency and safety, ensuring compliance with local regulations.

Equipped with the latest technologies in planning and design, our Technical Projects Office puts forth solutions for each customer.

The use of the BIM software allows an efficient workflow. All the projects are developed with BIM technology which ensures an optimal result, a better understanding of the project and all the technical documentation necessary for the installation at its final destination.

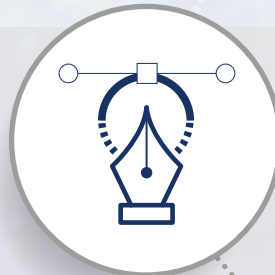
The 3D development and Virtual Reality simulations allow an immersive experience for the client who will know about his project before it is built.

# A wide spectrum of advantages to suit all your needs



## USER FRIENDLY

- Intuitive user interface.
- Flexible in use.
- Allows users quick and easy learning.



## DESIGN

- Modern and minimalist design facilitates the cleaning process.
- Modular concept for customized solutions.
- Complete cabinet design.



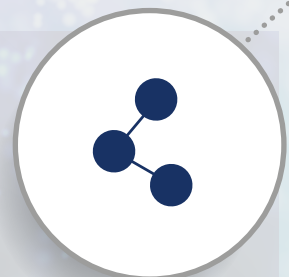
## USABILITY & SAFETY

- Design based on Risk Assessment.
- Data Integrity ensured.
- Validation for batch conformity.



## ERGONOMICS

- Generous screen size for optimal visualization.
- Extensible and removable shelves for ease and flexibility during loading process.
- Comfortable operation thanks to the optimal loading size.



## CONNECTIVITY

- Connection to customer SCADA.
- Remote data storage.



### EASY MAINTENANCE

- Full access from different sides.
- Operation and replacement information on the control panel.
- Components commonly available in the market.



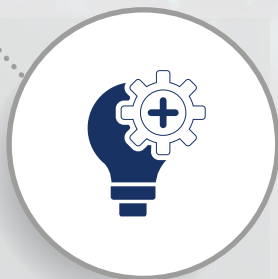
### GENTLE WITH PLANET

- Water and energy saving systems.
- Materials easily recyclable.
- Sustainable manufacturing.



### DOCUMENTATION

- Full validation documentation package.
- Data Storage.
- Complete report system.



### EFFICIENCY

- High-performance cycles.
- Adaptable cycle profiles.
- High energy and media saving.

# MOS Control System MATACHANA Operation System

The reproducibility of the sterilization processes is key to ensure compliance with Good Manufacturing Practices.

To facilitate the use of the sterilizer and minimize the errors, MATACHANA supplies the MPHS Series with the **MOS Control System** featuring:

- Based on Siemens or Allen Bradley
- Intuitive menu navigation
- Synoptic Diagram
- Comprehensive alarms and warnings
- Automatic Sensor Calibration
- Multilevel password protection

## Safe and Reliable

**MOS Control System** is aimed at making equipment operation safe and reliable. Working with the latest version of Siemens or Allen Bradley controller, to ensure the maximum reliability MATACHANA bases its software on the compliance of the Category 4 of GAMP 5. The design of **MOS Control System** makes the cycles traceable. All process is extensively documented by a modern reporting system that makes the data uncorruptable.

## Ready for Conformity 21 CFR Part 11

- ✓ User Management
- ✓ Ensures Data Integrity
- ✓ Provides an Audit Trail

## Flexible and User-Friendly

MATACHANA opts for a very flexible system, which allows the user a high adjustment of the parameters and functions of the cycles. The main commands are located in a logical and comprehensive way, for a simple and fast-track operation. The **MOS Control System** is easy to apply, allowing a fluid and intuitive navigation.



## Mechanical Features

As MATACHANA knows that perfect cycle performance is vital for the client, MPHS Series has been designed using the highest quality components, thus taking care of every batch.

### Safe and Robust

The result of the combination of good quality components and an optimized assembling operation is a high performance process.

#### Pressure Vessel

- ✓ Manufactured by MATACHANA using stainless steel 316L.
- ✓ Robotic welding guaranteeing the highest level of accuracy in each weld.
- ✓ Robotic polishing to meet any surface finishing.
- ✓ Design acc. ASME Section VIII, Division 1.

#### Piping & Instrumentation

- ✓ Sanitary clamp connections.
- ✓ 3D Rule accurately followed to avoid dead legs.
- ✓ Optimal chamber sealing with FDA compliant gaskets.
- ✓ Instrumentation diaphragm separation.
- ✓ Made of AISI 316L and following the ASME-BPE.
- ✓ Orbital welded joints with boroscope inspection.



## Technical data MPHS HD



### CHAMBER SIZES

| MODEL      | Width                | Height                | Depth                | Volume                           |
|------------|----------------------|-----------------------|----------------------|----------------------------------|
| MPHS61113  | 670 mm<br>26 3/8 in  | 1100 mm<br>43 5/16 in | 1300 mm<br>51 1/8 in | 958 l<br>33,83 ft <sup>3</sup>   |
| MPHS61115  | 670 mm<br>26 3/8 in  | 1100 mm<br>43 5/16 in | 1500 mm<br>59 in     | 1106 l<br>39,06 ft <sup>3</sup>  |
| MPHS61117  | 670 mm<br>26 3/8 in  | 1100 mm<br>43 5/16 in | 1700 mm<br>66 7/8 in | 1253 l<br>44.25 ft <sup>3</sup>  |
| MPHS81410  | 800 mm<br>31 1/2 in  | 1440 mm<br>56 3/4 in  | 1000 mm<br>39 3/8 in | 1152 l<br>40.68 ft <sup>3</sup>  |
| MPHS81413  | 800 mm<br>31 1/2 in  | 1440 mm<br>56 3/4 in  | 1300 mm<br>51 1/8 in | 1498 l<br>52.90 ft <sup>3</sup>  |
| MPHS81415  | 800 mm<br>31 1/2 in  | 1440 mm<br>56 3/4 in  | 1500 mm<br>59 in     | 1728 l<br>61.02 ft <sup>3</sup>  |
| MPHS91413  | 960 mm<br>37 3/4 in  | 1440 mm<br>56 3/4 in  | 1300 mm<br>51 1/8 in | 1797 l<br>63.46 ft <sup>3</sup>  |
| MPHS91417  | 960 mm<br>37 3/4 in  | 1440 mm<br>56 3/4 in  | 1700 mm<br>66 7/8 in | 2350 l<br>83 ft <sup>3</sup>     |
| MPHS91424  | 960 mm<br>37 3/4 in  | 1440 mm<br>56 3/4 in  | 2400 mm<br>94 1/2 in | 3318 l<br>117.17 ft <sup>3</sup> |
| MPHS122115 | 1260 mm<br>49 5/8 in | 2150 mm<br>84 5/8 in  | 1500 mm<br>59 in     | 4064 l<br>143.5 ft <sup>3</sup>  |
| MPHS122124 | 1260 mm<br>49 5/8 in | 2150 mm<br>84 5/8 in  | 2400 mm<br>94 1/2 in | 6502 l<br>229.61 ft <sup>3</sup> |

# Customer service

Wherever you need us

We are dedicated to service with personalized attention and efficiency anywhere in the world.

The team of professionals that make up the Technical Engineering Support of MATACHANA consists of service engineers, technicians and skilled experts with extensive knowledge of the wide range of MATACHANA products and extensive proven experience in managing facilities maintenance.

Our qualified Service & Support stands out for its skilled preparation, dynamic response and ability to troubleshooting. To these features must be added a total involvement to every one of our customers.



Steam Sterilizer for Pharmaceutical Applications  
Matachana MPHS Horizontal Sliding Doors

**matachana** worldwide





## Innovation is the way forward

Since the company's foundation more than 50 years ago, our mission has been to provide the best service, bringing our knowledge and field experience to our customers to facilitate their daily work, allowing them to be efficient in the production whereas keeping rigorously the quality.

MATACHANA has a worldwide presence, with offices based in Spain, France, Germany, Italy, United States, Argentina and Malaysia, or through its distributors in over 110 countries.

In MATACHANA we are aware that Training and Service contribute decisively to achieve customer satisfaction. For this reason, we have always invested in the development of these two areas of activity, which enables a direct contact with customers and help us to develop together a continuous improvement process.

### Technical Engineering Support

An assistance provided by engineers, highly skilled expert technicians and support staff, all committed to ensure the proper equipment operation and condition.

### MIEC, training center

As we feel seriously committed and liable for achieving the optimum operation from the MATACHANA equipment, we invest in the training of future users, proposing a service of educational courses to all our customers on a regular basis and in the 5 continents.

### Environmentally friendly

The devices are designed and manufactured using the latest technologies on the market to achieve the best results in terms of energy savings and reduction in water consumption. Our Production Center located in Castelldefels (Barcelona) complies with the ISO 14001 Environmental Management System.

### Quality

The MATACHANA devices are developed, manufactured and tested within a strict quality control according to the international Standard ISO 9001.



#### Matachana Headquarters

Almogàvers, 174  
08018 Barcelona · Spain  
Tel. (+34) 93 4868700  
[www.matachana.com](http://www.matachana.com)

#### Matachana France

Europarc · 5 allée des Saules  
94043 Créteil Cedex · France  
Tel. (+33) 1 41941780  
[www.matachana.fr](http://www.matachana.fr)

#### Matachana Germany

An der Trave 14  
23923 Selmsdorf · Germany  
Tel. (+49) 451 280720  
[www.matachana.de](http://www.matachana.de)

#### Metalarrinox - Matachana Group

Via Berlino, 6 loc. Zingonia  
24040 Verdellino (BG) · Italy  
Tel. (+39) 035 883122  
[www.metalarrinox.eu](http://www.metalarrinox.eu)

#### Matachana USA

300 North Pottstown Pike,  
Suite 110  
Exton, PA, 19341, USA  
Tel. (+1) 484 8732763  
[www.matachanausa.com](http://www.matachanausa.com)

#### Matachana Argentina

Lincol 2572 · Villa Maipu,  
(B1650KED) San Martín  
Buenos Aires · Argentina  
Tel. (+54) 11 48390880  
[www.matachana.com](http://www.matachana.com)

#### Matachana Asia Pacific

7-1, Tower 3, Avenue 3, The Horizon,  
Bangsar South, No. 8 Jalan Kerinchi  
59200, Kuala Lumpur, Malaysia  
Tel. (+60) 3 22423250  
[www.matachana.com](http://www.matachana.com)